

Management Information System

Mobics MIS system is a data aware Management Information System that can retrieve statistic data from almost every existing and future Mobics control system:

- Sheet, towel and garment folders
- Sheet and small piece feeders
- Mobics Universal Count System
- Mobics Energy Logger
- Monorail System
- (Batch) Washers
- Dryers
- Tunnel finishers
- Conveyor systems
- And many more

Mobics MIS provides managers and engineers the tools they need to analyse and compare: production, outfall, down time and errors over a self chosen time span. When used correctly Mobics MIS can help to improve and optimize throughput and efficiency of machines and staff. Mobics MIS uses 3D graphs to make complex and large data sets easy to interpret. Unlike other MIS systems, there is no loss of current data when a machine is running without the MIS software. All recent data is stored in local memory of the machine controller. It is possible to run Mobics MIS simultaneously on more than one PC in the same network.

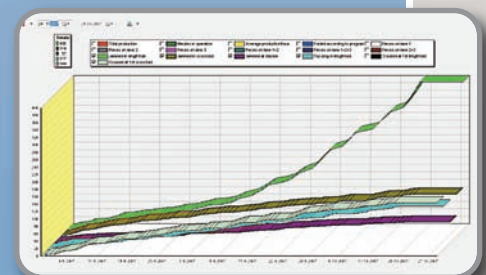
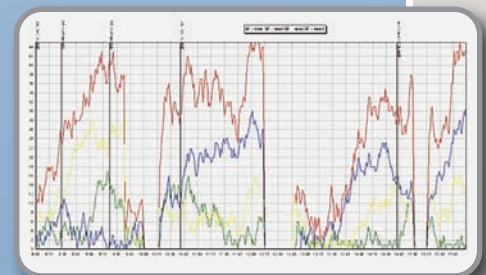
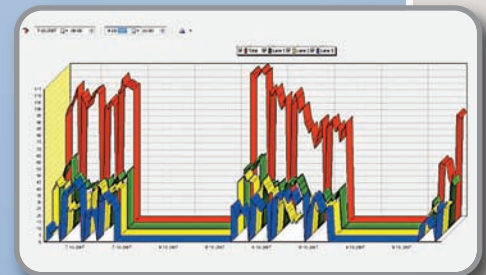
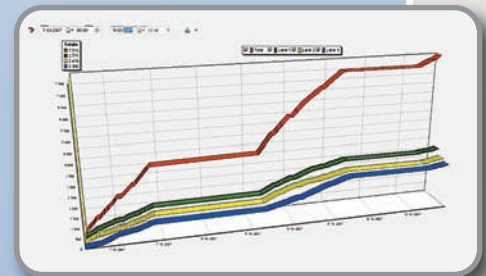
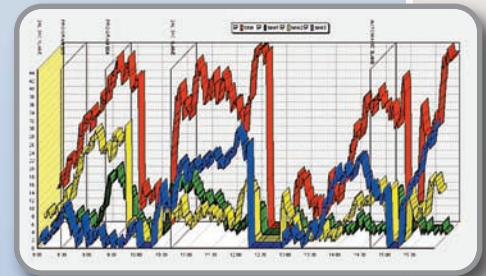
Mobics Management Information System features:

- Easy to setup
- Competitive price
- Robust and stable
- User friendly interface
- Large data series easy to interpret
- Data series can be exported to almost every database or spreadsheet
- Graphs can be exported as pictures for use in presentations or reports
- Graphs can be printed directly from MIS software
- Up to 100 machines can be connected to one MIS

Charts can be viewed in 2D and 3D. In 3D mode charts can be rotated, moved and zoomed to achieve optimal view. Mobics MIS is a universal MIS. Therefore Mobics MIS contains more functions and possibilities than a custom made MIS. On request Mobics can adapt the MIS to meet special customer specification.

Mobics Universal Count system

For machines without Mobics controller we offer the Mobics Universal Count system to collect data. This system makes it possible to retrieve data from alien machine controllers. One Mobics Universal Count System can collect data from up to 10 machines. It's possible to connect multiple count systems to one Mobics MIS. The Mobics Universal Count System has limited possibilities for logging errors and recipe changes. The Mobics Universal Count System can also work without Mobics MIS



Technical information

- Clear overview screen with all machines on the left side and detailed information of the selected machine on the right side.
- Runs on a standard desktop PC with Windows XP, NT or Vista.
- Uses standard network hardware.
- Can be integrated in an existing company network, but can also work as a separate network.
- Most charts can show counter information standard and cumulative.
- Most charts can be filtered for self chosen time span and data series.
- Export data as:
 - Picture
 - Metafile
 - Bitmap
 - Data
 - Text, comma separated values (.csv)
 - XML
 - HTML Table
 - Excel
 - Possibilities to run MIS through internet.

Machine list

Chart selection

Chart manipulation

Legenda and enable / disable data series

Graph (Average production chart)

Alarm history

Message	Program	Active time	Date	Time
001 EMERGENCY STOP	3	7	31-10-2007	10:32:47
002 MOTOR MEDICAL OFF	3	40	31-10-2007	10:35:24
007 POCE LATE END LENGTH LANE 2	3	163	29-10-2007	17:41:51
002 SHEET STUCK END LENGTH LANE 2	3	25	29-10-2007	17:38:24
003 Wax cloth request	3	12	29-10-2007	15:04:12
005 Piece too late, 2nd cross	3	34	25-10-2007	11:16:28
188 Piece too long, stadler lane 1	4	5	26-10-2007	12:56:52
213 Piece evoked crossfold	4	10	26-10-2007	12:05:49

Technical information

Connection information

Machine name

Active program (recipe)

Machine status

Production indicator